

# Lucky Penny

Fabrics by Alison Glass

Quilt designed by  
Heidi Pridemore  
Quilt size: 81" x 93"



*Lucky Penny is about taking the time and having the eyes to notice the details in the world. Like finding a penny on the ground, one must choose to look in order to see. Seeing the details artisans have put into their work, the expert craftsmanship, brings connectedness with others, and to some, simple happiness. These designs are a collection and celebration of a tiny sample of those details. The name of each design in the line (Mural, Fountain, Clover, Stoplight, Bike Path, Fallen Leaves, Column, and Grate) expresses an aspect of the objects found in everyday city life. Objects that are common, yet at the same time made in beautiful ways and with great skill. The color palettes, morning, noon, and night, refer to the impact light has on how the details are perceived.*



**makower uk®**

1384 Broadway  
New York, NY 10018  
(800) 223-5678

[www.andoverfabrics.com](http://www.andoverfabrics.com)

# Lucky Penny Quilt

*Introducing Andover Fabrics new collection: Lucky Penny by Alison Glass  
Quilt designed by Heidi Pridemore*

Quilt finishes 81" x 93"  
208 4-Patch Blocks: 2" x 2"

## Fabric Requirements

		Yardage	Blue	Charcoal	Brown
Fabric A	Mural*	2¾ yards	5893-B	5893-C	5893-N
Fabric B	Bike Path #1	2⅞ yards	5900-BY	5900-CR	5900-NT
Fabric C	Fountain	1⅓ yards	5895-BY	5895-CR	5895-NT
Fabric D	Column	2⅞ yards	5894-BC	5894-CR	5894-NY
Fabric E	Fallen Leaves	2⅞ yards	5899-BR	5899-C	5899-N
Fabric F	Grate	1 yard	5898-BY	5898-CG	5898-NT
Fabric G	Lucky Penny	½ yard	5897-BY	5897-CT	5897-NT
Fabric H	Bike Path #2	⅓ yard	5900-G	5900-C	5900-N
Fabric I	Bike Path #3	3 yards	5900-BE	5900-CG	5900-NR
*Backing	Mural	8 yards	5893-B	5893-C	5893-N

## Cutting Directions

**Note:** Borders are cut the exact lengths required plus ¼" seam allowances. WOF designates the width of fabric from selvedge to selvedge (approximately 42" wide).

**Fabric A** Cut (2) 11" x 52½" strips from the length of fabric (LOF).

Cut (2) 11" x 40½" strips from the LOF.

Fussy cut (12) 5½" squares centering each on a image from the remaining fabrics.

**Fabric B** Fussy cut (4) 1½" x 98" strips from the LOF, centering each on one line.

Cut (7) 4½" squares from the remaining fabric.

**Fabric C** Fussy cut (4) 11" squares centering each on the flowers as shown in the quilt photo.

Fussy cut (14) 4½" squares centering each on a flower.

**Fabric D** Fussy cut (4) 3" x 98" strips centering each in the pinwheel stripe from the LOF.

Fussy cut (14) 4½" squares from the flower vine stripe.

**Fabric E** Cut (4) 4½" x 98" strips from the LOF.

Cut (13) 4½" squares from the remaining fabric.

**Fabric F** Cut (2) 4½" x WOF strips. Sub-cut into fourteen 4½" squares.

Cut (9) 2½" x WOF strips for the binding.

**Fabric G** Cut (2) 4½" x WOF strips. Sub-cut into thirteen 4½" squares.

**Fabric H** Cut (1) 4½" x WOF strip. Sub-cut into (7) 4½" squares.

**Fabric I** Fussy Cut (4) 1½" x 98" strips from the LOF centering each on a line.

Fussy Cut (2) 2" x 64½" strips from the LOF centering each on a line.

Fussy Cut (2) 2" x 52½" strips from the LOF centering each on a line.

Fussy Cut (4) 2" x 11" strips from the LOF centering each on a line.

Fussy Cut (48) 2" x 10" strips from the LOF centering each on a line.

**Backing** Cut (3) 89" x WOF strips. Sew the strips together and trim to make one 89" x 101" backing piece.



## Framed Blocks

1. Center one 2" x 10" Fabric I strip on one side of a 5½" Fabric A square. Start sewing the strip a ¼" from the top edge of the Fabric A square and stop a ¼" from the bottom edge. DO NOT TRIM THE EXCESS. Repeat with the opposite side.
2. Repeat Step 1 to sew one 2" x 10" Fabric I strip to the top and bottom of the 5½" Fabric A square, making sure to stop and start ¼" away from each side of the Fabric A square.
3. To miter each corner, fold the block on a diagonal wrong side together. This should line up the Fabric I strips from adjacent sides (Fig. 1).
4. Starting at the sewn seam (represented by the arrow in Figure 1) draw a 45° line out to the edge of the fabric. Sew on the drawn line. Trim the excess fabric leaving a ¼" seam. Repeat this step with the remaining corners to make one 8½" Framed block (Fig. 2).
5. Repeat Steps 1-4 with the remaining 5½" Fabric A squares and 2" x 10" Fabric I strips to make twelve 8½" framed blocks total.

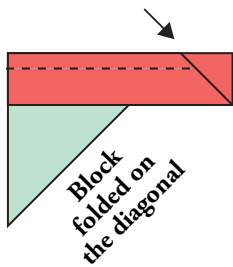


Fig. 1

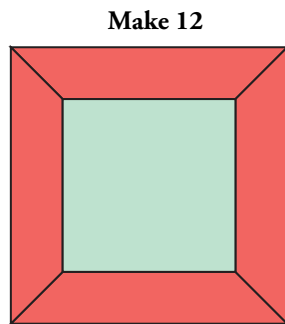


Fig. 2

## Quilt Top

*Refer to the quilt top layout for fabric placement while assembling.*

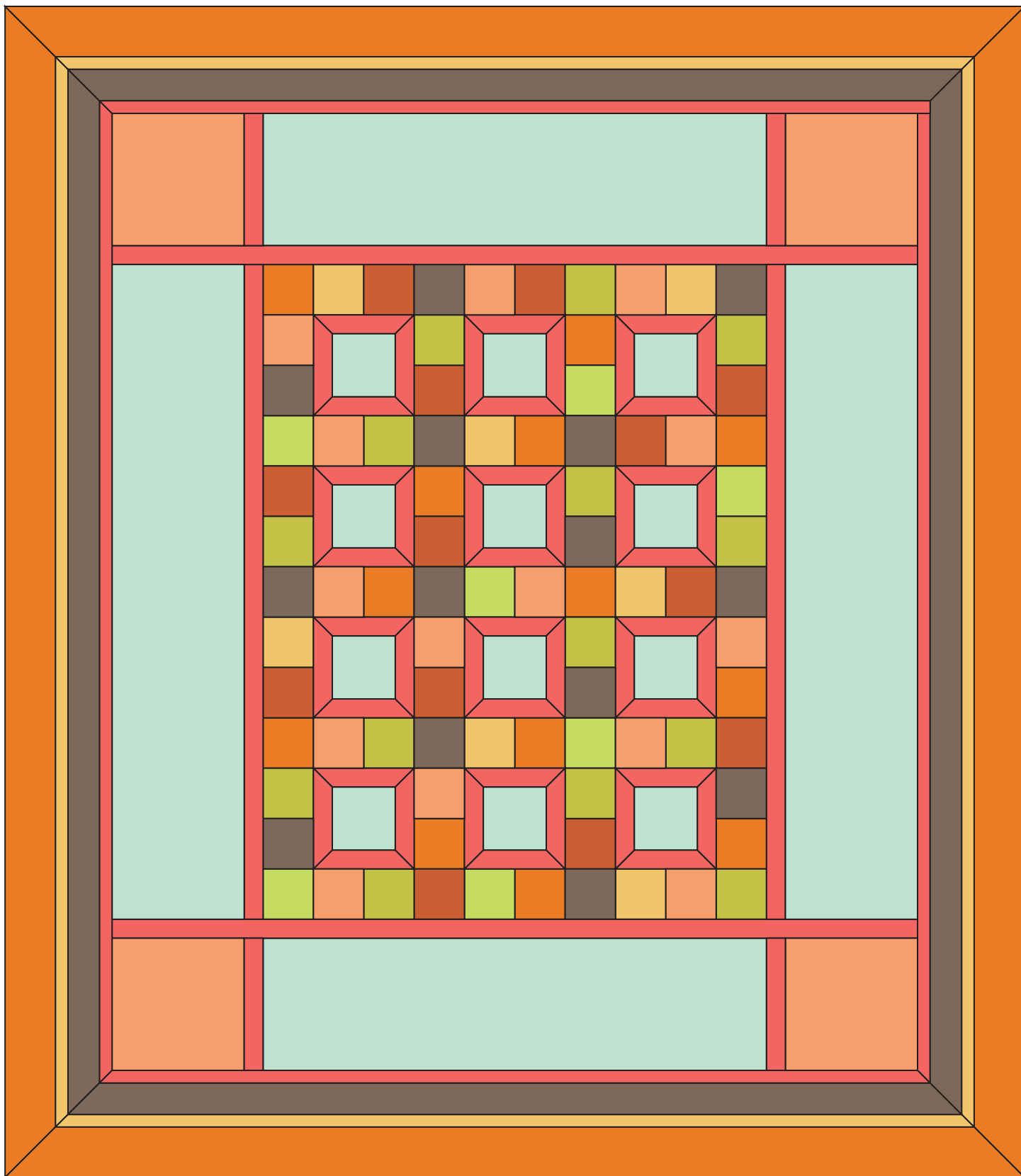
6. Following the quilt top layout, sew together 10 assorted 4½" blocks to make the 4½" x 40½" Center Row #1. Repeat to make Center Row #3, Center Row #5, Center Row #7 and Center Row #9.
6. Following the quilt top layout, sew together 8 assorted 4½" blocks and three 8½" framed blocks to make the 8½" x 40½" Center Row #2. Repeat to make Center Row #4, Center Row #6 and Center Row #8.
7. Sew the center rows together in numerical order to make the 40½" x 52½" quilt top center.
8. Sew one 2" x 52½" Fabric I strip to each side of the quilt top.
9. Sew one 11" x 52½" Fabric A strip to each side of the quilt top.
10. Sew one 2" x 64½" Fabric I strip to the top and bottom of the quilt top.
11. Sew one 2" x 11" Fabric I strip to each end of one 11" x 40½" Fabric A strip to make the top pieced row. Sew one 11" Fabric C square to each end of the top pieced row to complete the 11" x 64½" top row. Repeat to make the bottom pieced row. Sew the pieced rows to the quilt top. The quilt top should measure 64½" x 76½".
12. Sew these four strips together in the following order, lengthwise: 4½" x 98" Fabric E strip, 1½" x 98" Fabric B strip, 3" x 98" Fabric D strip and 1½" x 98" Fabric I strip to make one pieced border. Repeat to make four pieced borders.
13. Repeat Steps 1-4 to sew the borders to the quilt top, aligning the Fabric I strip with the edge of the quilt top and to miter the corners to complete the 81½" x 93½" quilt top.

## Finishing the Quilt

14. Layer and quilt as desired. Sew the nine 2½" x 42" Fabric F strips together end-to-end with a 45° seams to make the binding. Fold this long strip in half lengthwise with wrong sides together and press. Bind as desired.

# Lucky Penny Quilt

---



Quilt Diagram



1384 Broadway  
New York, NY 10018  
(800) 223-5678  
[www.andoverfabrics.com](http://www.andoverfabrics.com)

# Lucky Penny

by Alison Glass

*Andover  
Fabrics™*  
**makower uk®**



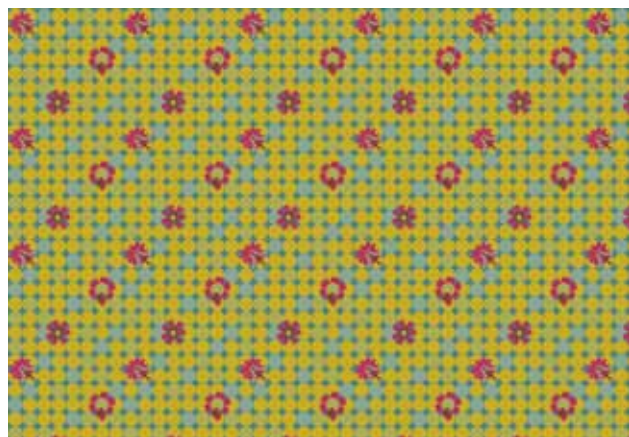
5893-N



5895-NT



5894-NY



5897-NT



5898-NT



5899-N



5900-N



5900-NR



5900-NT

\*Indicates fabric used  
in quilt pattern.  
Fabrics shown are  
10% of actual size.

*Free Pattern Download  
available at  
[www.andoverfabrics.com](http://www.andoverfabrics.com)*



1384 Broadway  
New York, NY 10018  
(800) 223-5678  
[www.andoverfabrics.com](http://www.andoverfabrics.com)



1384 Broadway  
New York, NY 10018  
(800) 223-5678  
[www.andoverfabrics.com](http://www.andoverfabrics.com)

# Lucky Penny

by Alison Glass

*Andover  
Fabrics™*  
**makower uk®**



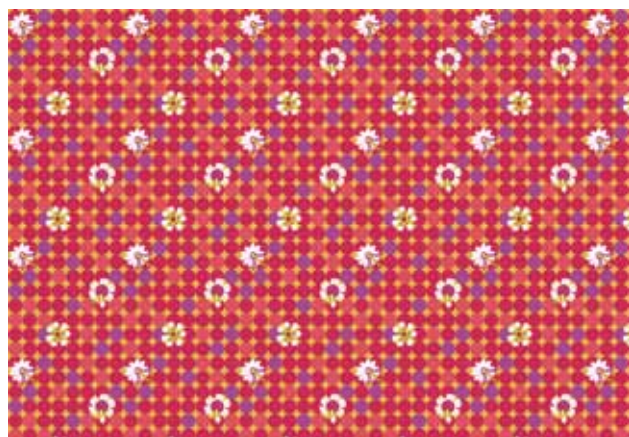
5893-B\*



5895-BY\*



5894-BC\*



5897-BY\*



5898-BY\*



5899-BR\*



5900-G\*



5900-BY\*



5900-BE\*

\*Indicates fabric used  
in quilt pattern.  
Fabrics shown are  
10% of actual size.

*Free Pattern Download  
available at  
[www.andoverfabrics.com](http://www.andoverfabrics.com)*